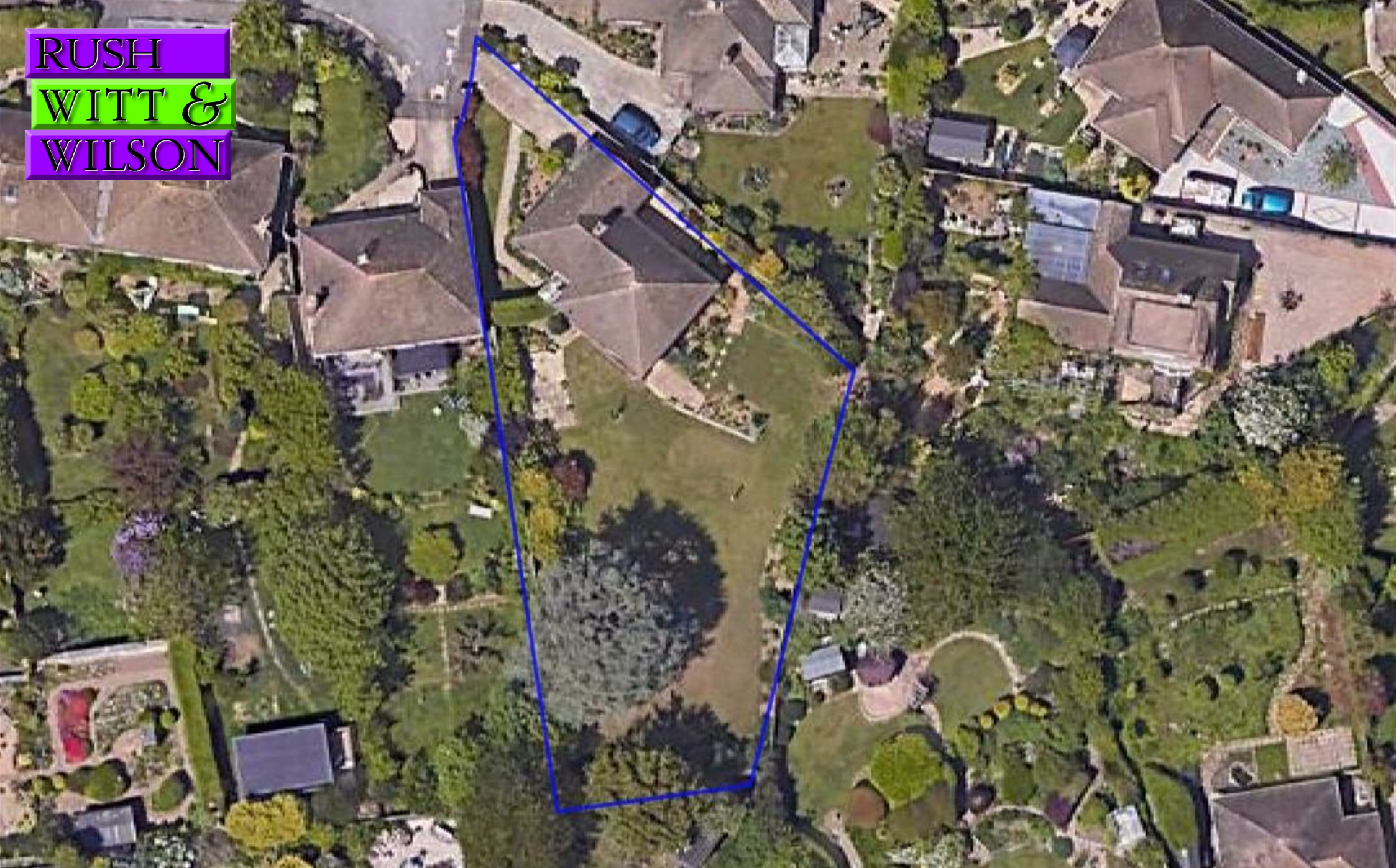


**RUSH
WITT &
WILSON**



**32 Broad View, Bexhill-On-Sea, East Sussex TN39 4HW
Guide Price £415,000**

A beautiful spacious two double bedroom, detached 'Larkin' built bungalow, approx. 0.24 acres of extensive private gardens with stunning views across Bexhill towards the sea, gas central heating system, double glazed windows and doors, presented to an exceptional standard by the current vendor, cul-de-sac location with garage and off road parking, basement workshop accessed via rear garden. The property and plot offers plenty of potential to extend, subject to normal planning consents. Viewing comes highly recommended by RWW Sole Agents Bexhill. Council Tax Band D.



Entrance Porch

With entrance door, obscured glass window to the side and front elevations.

Entrance Hallway

Double radiator, built in linen cupboard, wood flooring.

Living Room

19'4" x 16'4" (5.91 x 5.00)

Windows to both the front and side elevations, double radiator, brick fireplace, wood flooring.

Kitchen

13'3" x 11'2" (4.05 x 3.41)

Window and doors to the side elevation, fitted kitchen comprising a range of base and wall units with rolled edge worktops, single drainer sink unit with mixer tap, plumbing for washing machine, gas hob, integrated double oven with grill, space for American style fridge/freezer, gas central heating and domestic hot water boiler, wood flooring.

Bedroom One

15'6" x 12'7" (4.74 x 3.85)

Window to the rear elevation, double radiator.

Bedroom Two

14'11" x 12'5" (4.56 x 3.81)

Windows to both the rear and side elevations with stunning views across Bexhill towards the sea, double radiator.

Bathroom

Suite comprising roll top bath, shower screen, chrome shower head, with chrome controls, chrome heated towel rail, wall mounted wash hand basin with mixer tap, wc with low level flush, tiled walls, obscured glass windows to the side elevation.

Outside

Approx. 0.24 Acres in total.

Front Garden

Mainly laid with plants, shrubs and flowerbeds, off road parking is available on driveway, pathways lead to front entrance and side entrance.

Rear Garden

Patio area can be found to the side of the bungalow, the rear garden is extensive in size, mainly laid to lawn with well

stocked shrub and flowerbeds with a whole host of plants, shrubs and trees of various kinds, all enclosed with a combination of hedging and fencing to all sides, additional patio area suitable for alfresco dining, stunning views across Bexhill to wards the sea.

Workshop

Situated under the bungalow, door giving access onto the rear garden.

Garage

With electrically operated up and over door, personal door to the rear with obscured glass window, power and light.

Agents Note

None of the services or appliances mentioned in these sale particulars have been tested. It should also be noted that measurements quoted are given for guidance only and are approximate and should not be relied upon for any other purpose.



GROUND FLOOR
1107 sq.ft. (102.8 sq.m.) approx.

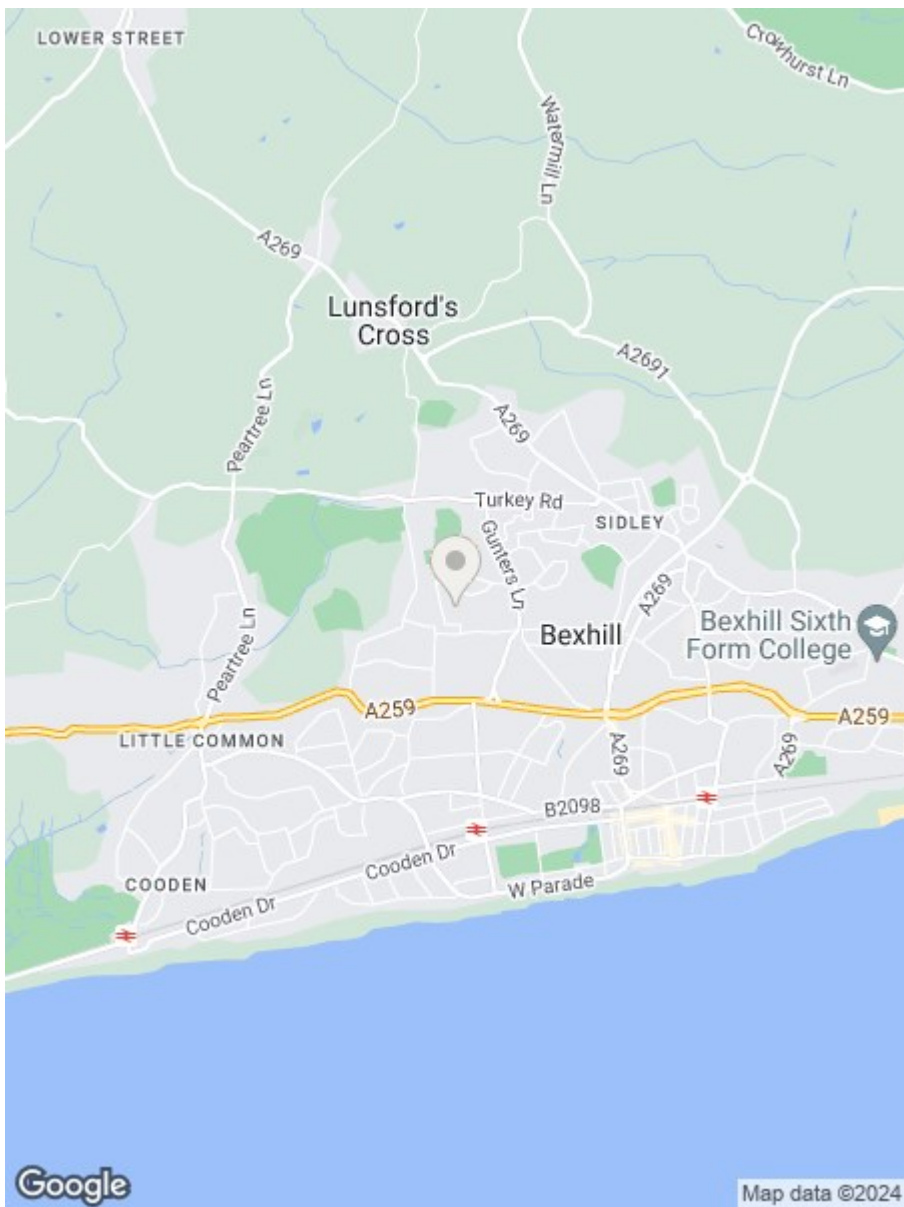
GARDEN STORE
(UNDER HOUSE)
183 sq.ft. (17.0 sq.m.) approx.



TOTAL FLOOR AREA : 1289 sq.ft. (119.8 sq.m.) approx.

Whilst every attempt has been made to ensure the accuracy of the floorplan contained here, measurements of doors, windows, rooms and any other items are approximate and no responsibility is taken for any error, omission or mis-statement. This plan is for illustrative purposes only and should be used as such by any prospective purchaser. The services, systems and appliances shown have not been tested and no guarantee as to their operability or efficiency can be given.

Made with Metropix ©2024



**RUSH
WITT &
WILSON**

**Residential Estate Agents
Lettings & Property Management**



**3 Devonshire Road
Bexhill-on-Sea
East Sussex
TN40 1AH
Tel: 01424 225588
bexhill@rushwittwilson.co.uk
www.rushwittwilson.co.uk**